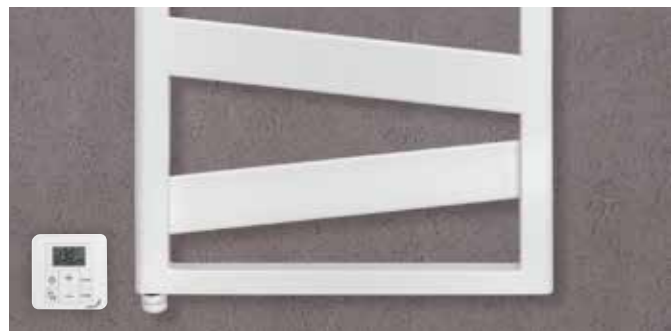


Zehnder Kazeane



Radiator colour: Black Matt



Radiator colour: Ruby Red, Traffic White

Operation on hot water central heating system

Zehnder Kazeane decorative radiator made from vertically arranged D-profile tubes rounded at the outside, 30 x 40 mm, plus offset and diagonally arranged flat tubes, 70 x 8 mm, which wrap around the bathroom radiator like a steel band. The resulting generous cut-outs on two levels create space for hanging several towels. Additionally, one or two horizontal flat tubes, depending on height. D-profile tubes arranged at the top and side, plus square tube, 30 x 30 mm, at bottom create a functional mounting plate.

Thermal output to EN 442, with CE marking. With 4 connections at bottom, 2 x central 1/2" for flow/return, spacing 50 mm and 2 x 1/2", outside left and right, with directional air vent.

Radiator with powder coating, in colour RAL 9016 as standard, in special colour on request. Delivered ready to install with matching wall brackets and packaging.

Operating pressure	max. 4,0 bar
Operating temperature	max. 110°C
Height mm
Length mm
Model

Benefits

- Individuality through exceptional design
- Many different heights at which to hang a towel
- The arrangement of the flat tubes on two levels makes it easier to hang multiple towels – ideal for families
- Inconspicuous brackets concealed behind header tube
- Ample spaces between tubes make cleaning easy

Electric operation

Zehnder Kazeane decorative radiator, electric-only, made from vertically arranged D-profile tubes rounded at the outside, 30 x 40 mm, plus offset and diagonally arranged flat tubes, 70 x 8 mm, which wrap around the bathroom radiator like a steel band. The resulting generous cut-outs on two levels create space for hanging several towels. Also features one horizontal flat tube. D-profile tubes arranged at the top and side, plus square tube, 30 x 30 mm, at bottom create a functional mounting plate.

With integrated electric heating element RACY-C, degree of protection IP44 (splash-proof), for mains power supply of 230 V. With connection cable 1,2 m in length, with two-pin plug. Installation at bottom left. Decorative radiator filled with heat transfer fluid. Separate, battery-operated remote control device model 2 for controlling the room temperature. Radiator with powder coating, in colour RAL 9016 as standard, in special colour or chrome-plated. Delivered ready to install with matching wall brackets and packaging.

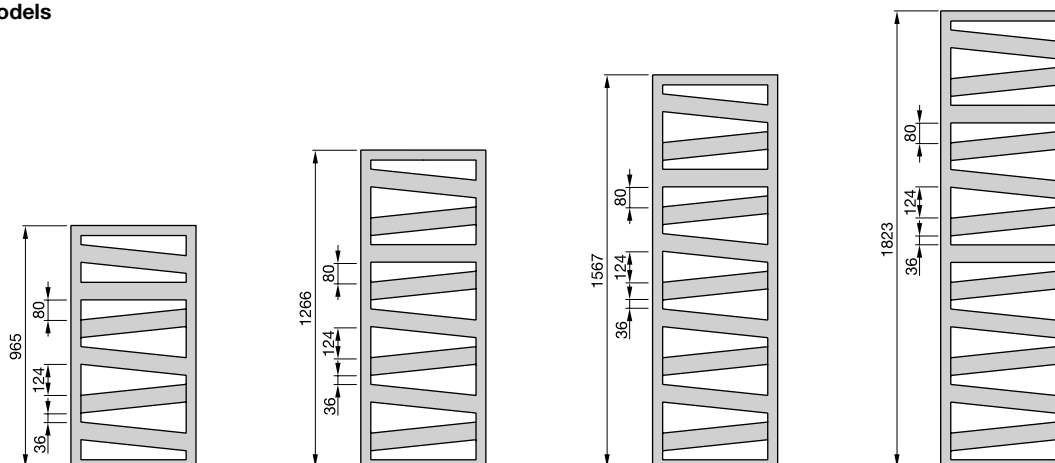
Output Watt
Height mm
Length mm
Model

Special benefits for electric operation with RACY-C

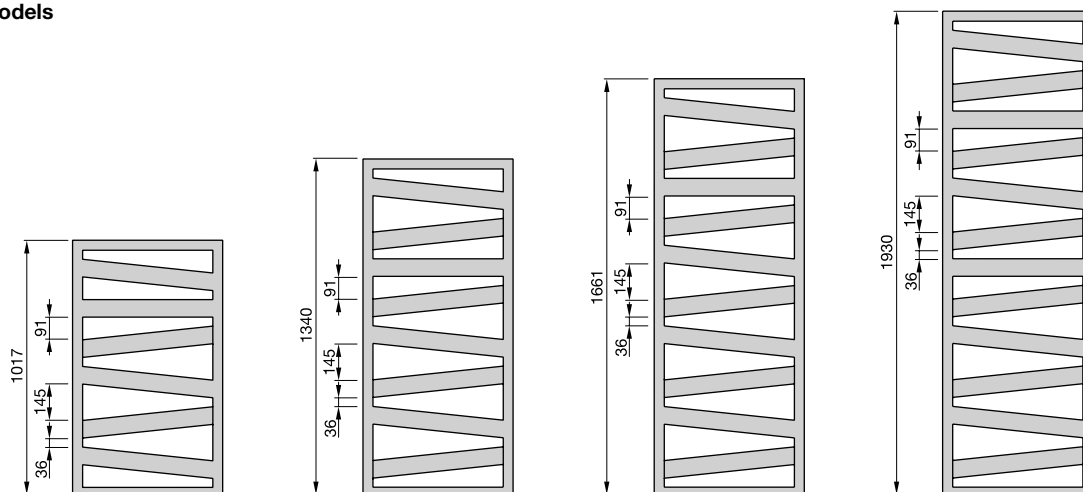
- Remote control device can be positioned as required
- Regulated room temperatures
- Comfortable operation as needed by customisable daily and weekly programmes
- Energy-efficient and comfortable heating via innovative open window detection
- Low energy consumption in stand-by mode ($\leq 0,5$ W)
- Keylock can be activated as required
- Timer function for up to 2 hours
- Ready-to-plug

Zehnder Kazeane

Overview of models Length 500



Overview of models Length 600



Connection to hot water central heating system

Painted version

Model	H mm	L mm	Thermal output				Exp. n	Classification Electric heating element Watt	V dm ³	M kg	Price RAL 9016 €	Price ^① Cat. 1 €
			EN 442 ^② W	70/55/24 W	55/45/24 W	55/45/20 W						
RK-100-050	965	500	398	284	175	210	1,24	300	3,4	8,4	636,02	795,02
RK-130-050	1266	500	509	364	224	268	1,24	300	4,1	10,7	707,52	884,40
RK-160-050	1567	500	621	445	275	329	1,23	600	4,8	13,1	822,76	1.028,44
RK-180-050	1823	500	723	515	316	379	1,25	600	5,7	15,1	924,88	1.156,11
RK-100-060	1017	600	473	337	206	248	1,25	300	3,8	9,9	656,46	820,58
RK-130-060	1340	600	608	435	267	320	1,24	600	4,6	12,6	730,85	913,56
RK-170-060	1661	600	743	531	327	391	1,24	600	5,4	15,4	862,14	1.077,67
RK-190-060	1930	600	847	604	370	444	1,25	600	6,5	18,0	948,22	1.185,28

Chrome-plated version

Model	H mm	L mm	Thermal output				Exp. n	Classification Electric heating element Watt	V dm ³	M kg	Price Chrome €
			EN 442 ^② W	70/55/24 W	55/45/24 W	55/45/20 W					
RKC-100-050	965	500	261	187	114	137	1,27	-	3,4	8,5	1.334,79
RKC-130-050	1266	500	327	235	142	171	1,27	300	4,1	10,8	1.485,05
RKC-160-050	1567	500	393	282	171	205	1,28	300	4,8	13,1	1.730,12
RKC-180-050	1823	500	461	330	199	240	1,28	300	5,7	15,4	1.959,16
RKC-100-060	1017	600	304	218	132	158	1,28	300	3,8	10,0	1.377,10
RKC-130-060	1340	600	386	277	168	201	1,27	300	4,6	12,7	1.590,07
RKC-170-060	1661	600	468	336	204	245	1,27	300	5,4	15,4	1.805,99
RKC-190-060	1930	600	544	390	236	283	1,28	300	6,5	17,9	2.020,42

① For special colours in categories 1 and 2, see "Special solutions" and "Colour chart"

② Thermal output to EN 442, ΔT 50 K (75/65/20°C)

Electric-only operation



Painted version

Model	H	L	Classification Electric heating element Watt	Price	Price ^①
	mm	mm		RAL 9016 €	Cat. 1 €
RK-130-050/GD	1291	500	500	1.236,55	1.422,03
RK-160-050/GD	1592	500	600	1.414,64	1.626,85
RK-130-060/GD	1365	600	600	1.407,51	1.618,63
RK-170-060/GD	1686	600	750	1.598,40	1.838,15

Chrome-plated version

Model	H*	L	Classification Electric heating element Watt	Price
	mm	mm		Chrome €
RKC-130-050/GD	1291	500	300	2.059,81
RKC-160-050/GD	1592	500	300	2.357,41
RKC-130-060/GD	1365	600	300	2.390,97
RKC-170-060/GD	1686	600	500	2.802,34

*Total height incl. electric heating element

Standard scope of delivery for operation on hot water central heating system

- Powder coating to DIN 55900, RAL 9016
- 4 x 1/2" connections for flow, return
- 1/2" directional air vent
- Mounting accessories in colour of radiator
- Packaging

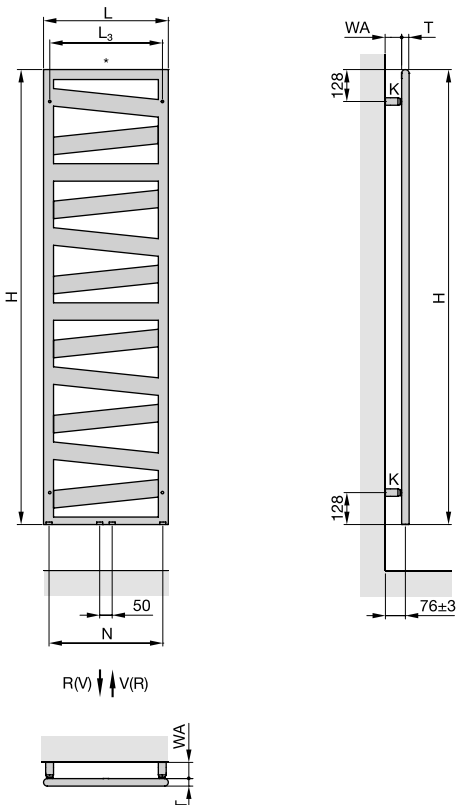
Standard scope of delivery for electric operation

- Powder coating to DIN 55900, RAL 9016
- Filled with heat transfer fluid
- With integrated electric heating element RACY-C, bottom left
- Electric heating element cover in colour of radiator
- Control panel in white; with chrome-plated cover in the case of chrome-plated radiators
- Mounting accessories in colour of radiator
- Packaging

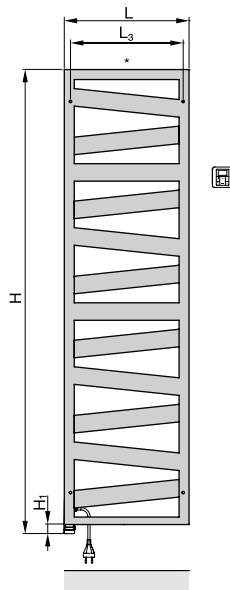
Special solution on request (surcharge)	Article number	Price €
■ Special finish to category 2 (surcharge on cat. 1)	M100011640	146,76
■ Surface in metal look: stainless-steel look (reduced output approx. 8%)	M100012332	As in Cat. 1
■ Towel hook, for attaching, set of 2, chrome	480438	57,04
■ Zehnder valves, lockshield valves and connection fittings	-	See p. 165 onwards

Operation on hot water central heating system:

Wall mounting

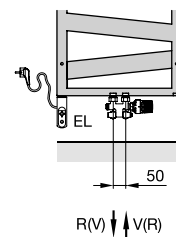


Electric operation:



Dual energy operation:

Connection to hot water central heating system with electric heating element (fig. with DBM)



- H = Height
- H₁ = 25 mm
- L = Length
- T = Depth = 30 mm
- K = Bracket
- WA = Wall clearance = 61±3 mm
- V = Flow 1/2"
- R = Return 1/2"
- * = Venting 1/2"
- N = Connection centre, L - 44 mm
- L₃ = Fixing dimension, L - 49 mm

Dimensions in mm